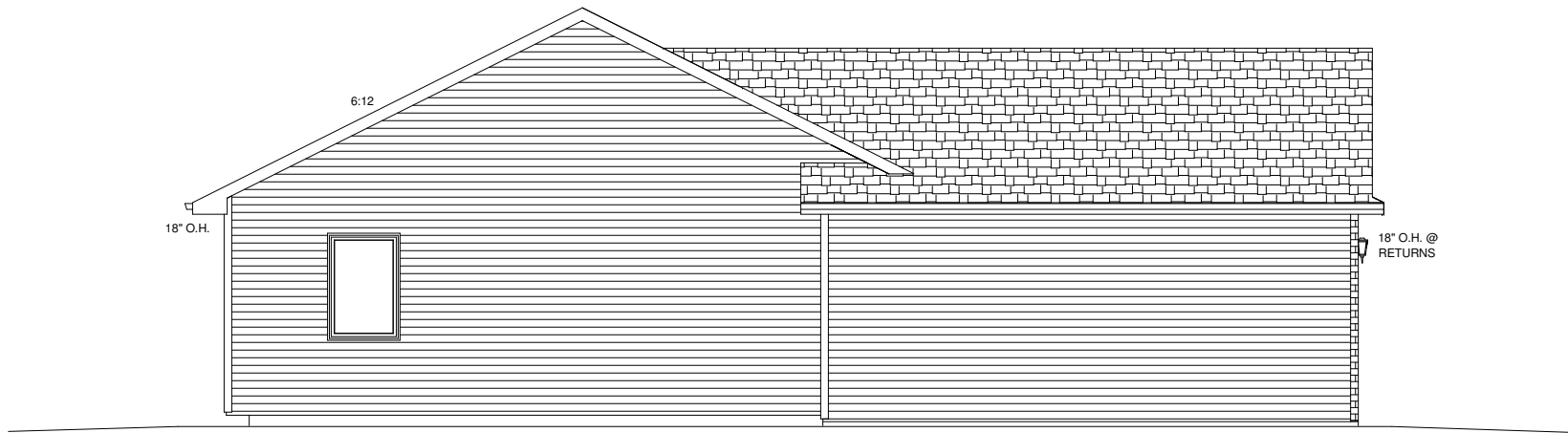
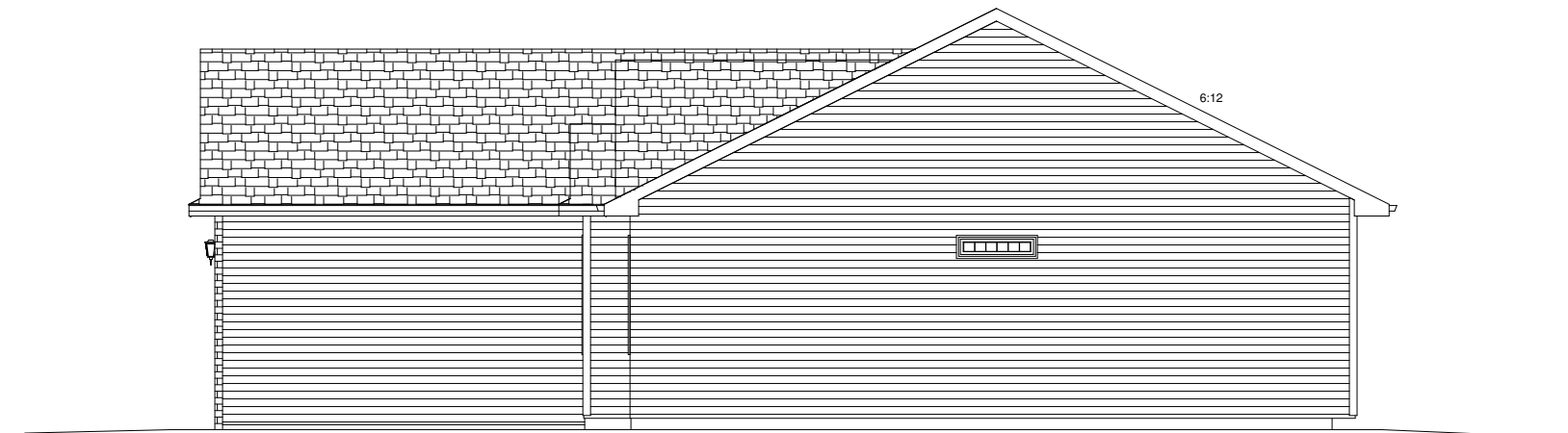




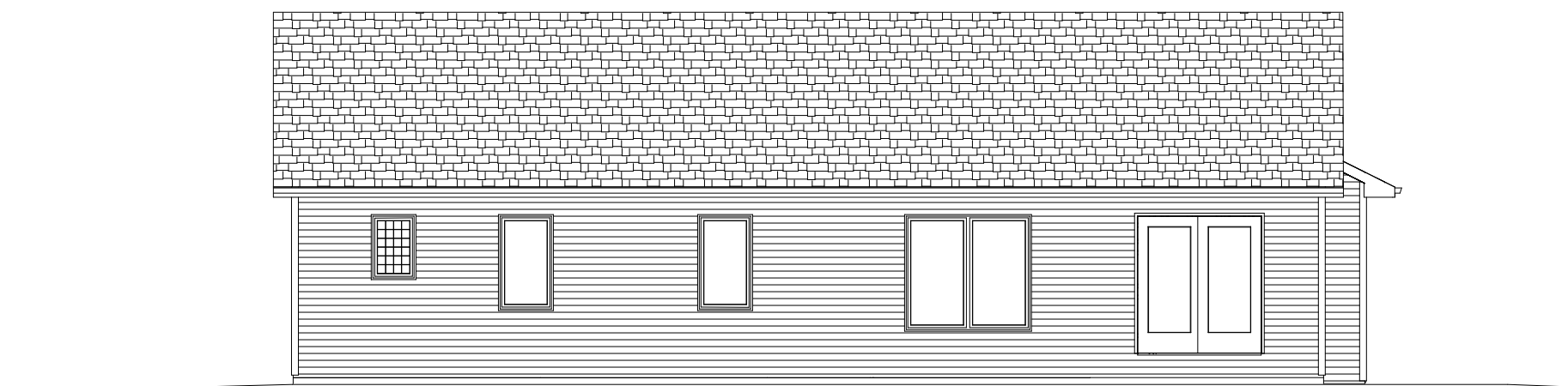
FRONT ELEVATION SCALE 1/4" = 1'



LEFT ELEVATION 1/8" = 1'

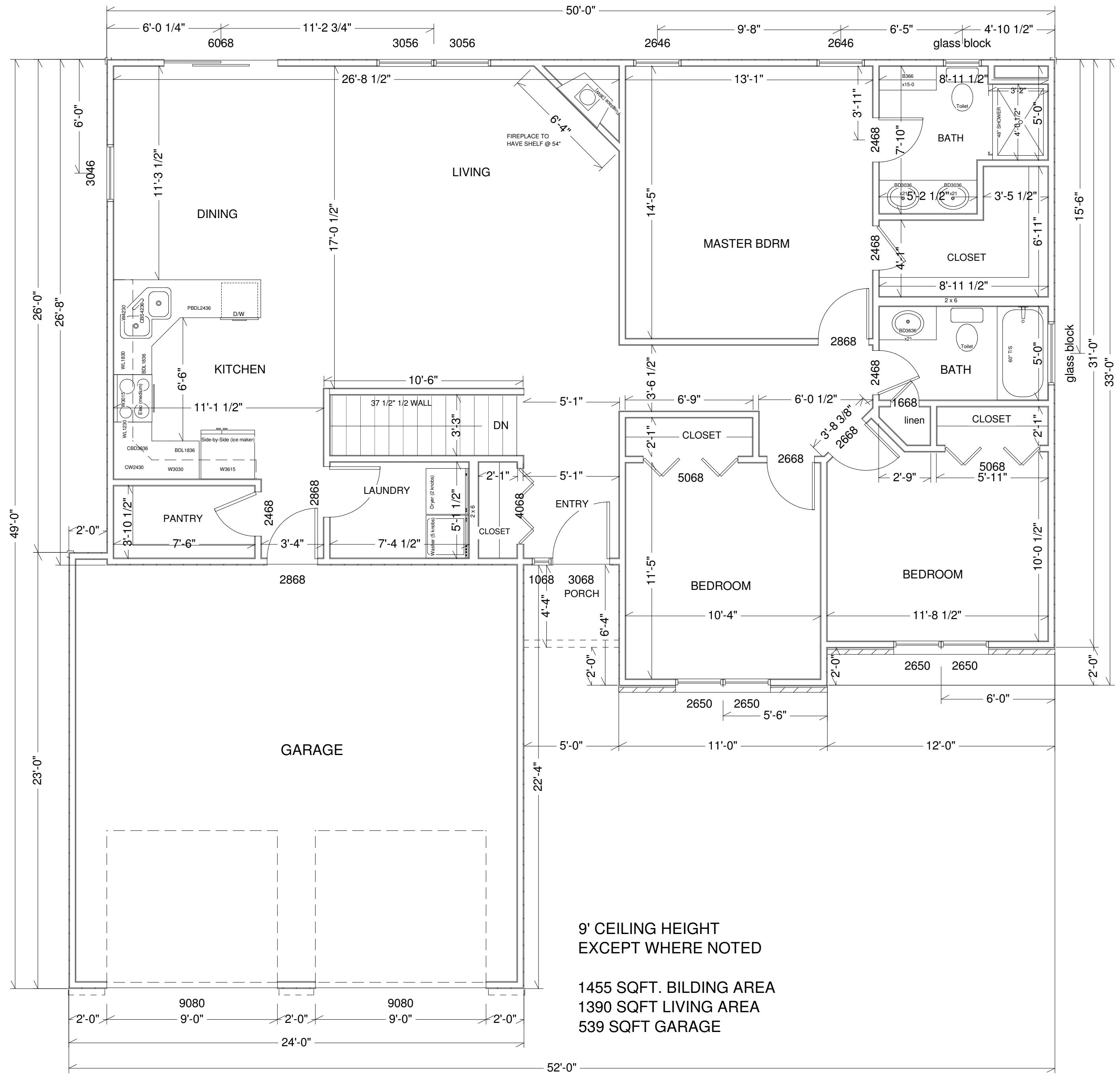


RIGHT ELEVATION 1/8" = 1'



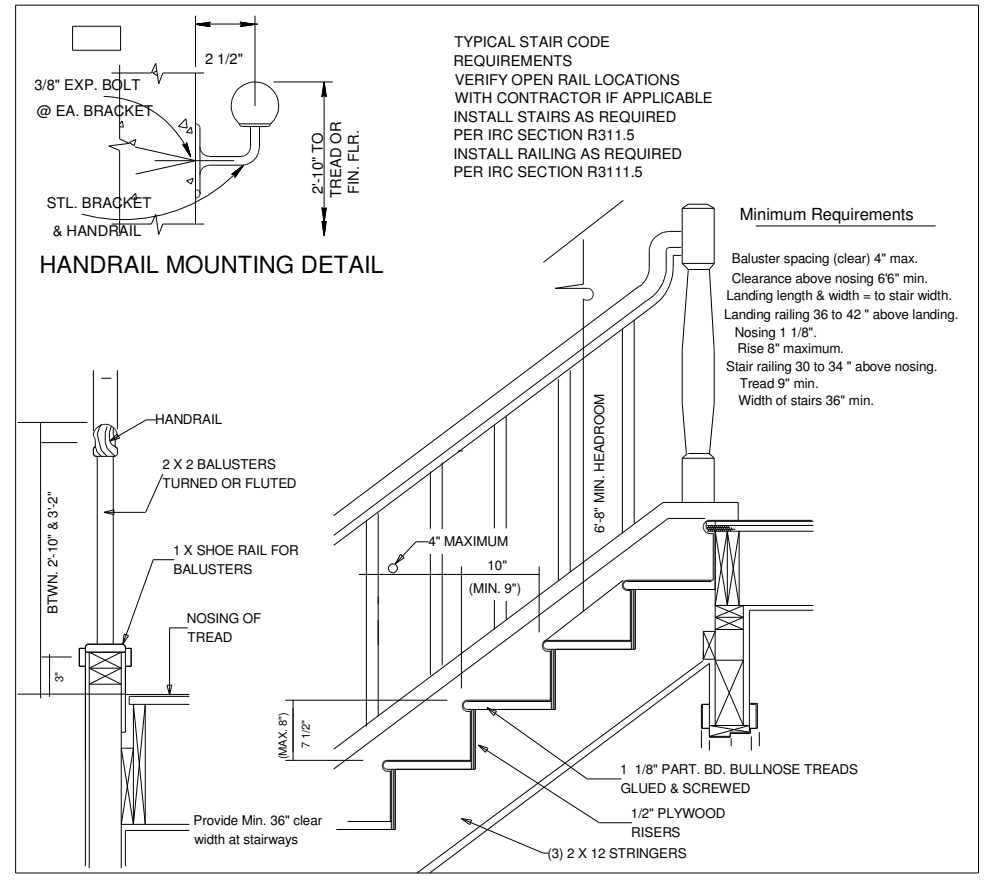
REAR ELEVATION 1/8" = 1'

ALL RIGHTS RESERVED
 NOT FOR REPRODUCTION
 COPYRIGHT 2007 BY
 FIVE STAR HOMES LLC



9' CEILING HEIGHT
EXCEPT WHERE NOTED

1455 SQFT. BILDING AREA
1390 SQFT LIVING AREA
539 SQFT GARAGE



ELECTRICAL LEGEND

SYMBOL	DESCRIPTION
	METER SOCKET
	PANEL BOX
	CEILING FAN W/ LIGHT
	FLUORESCENT LIGHT FIXTURE
	110V CEILING LIGHT FIXTURE
	110V RECESSED LIGHT FIXTURE
	110V EAVE LIGHT FIXTURE
	110V CHANDILIER LIGHT FIXTURE
	110V WALL LIGHT FIXTURE
	SINGLE POLE SWITCH
	THREE WAY SWITCH
	FOUR WAY SWITCH
	DIMMER SWITCH
	OUTDOOR SWITCH
	110V DUPLEX RECEPTACLE
	110V DUPLEX RECEPTACLE GROUND FAULT INTERRUPTED
	110V DUPLEX RECEPTACLE W/ WEATHERPROOF COVER
	110V FLOOR MOUNTED DUPLEX RECEPTACLE
	240V RECEPTACLE
	TELEPHONE JACKS
	TELEVISION JACKS
	DOOR BELL PUSH BUTTON
	THERMOSTAT
	SMOKE DETECTOR
	EXHAUST FAN
	DOOR CHIME
	FIRE ALARM PANEL
	COMPUTER POINT

ALL RIGHTS RESERVED
 NOT FOR REPRODUCTION
 COPYRIGHT 2007 BY
 FIVE STAR HOMES LLC

